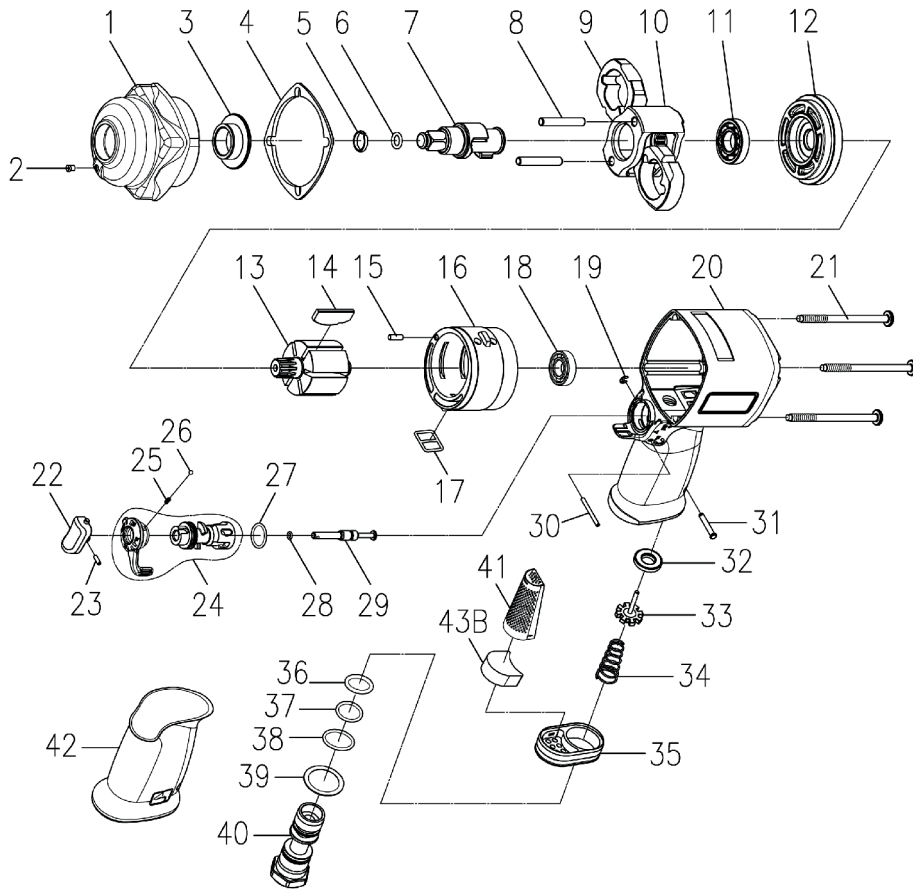


RRI-14 IMPACT WRENCH



Index No.	Part No.	Description	Q'ty
1	243D-002	Hammer Case	1
2	00-4603	Grease Fitting (1/8")	1
3	243D-010	Anvil Bushing	1
4	243D-019	Front Gasket	1
5	242-026	Anvil Collar	1
	250-033	Anvil Collar (1/2" Square)	1
6	00-4144	O-Ring (Ø5×Ø1.5)	1
	00-4103	O-Ring (P7) (1/2" Square)	1
7	243D-011NA3	3/8" Anvil	1
	243D-011NA4	1/2" Anvil	1
8	243D-016	Hammer Pin	2
9	243D-017	Hammer	2
10	243D-012	Hammer Cage	1
11	00-2317	Ball Bearing (EE4)	1
12	243D-005	Front End Plate	1
13	243D-007	Rotor	1
14	243D-008D	Rotor Blade	6
15	00-3423	Pin (Ø3×10L)	1
16	243D-006	Cylinder	1
17	243D-030	Square Ring	1
18	00-2326	Ball Bearing (6900)	1
19	00-3207	E Retainer Ring (E2,5)	1
20	243D-001	Motor Housing	1
21	243D-028	Screw (M5)	4
22	243D-023	Trigger	1

Index No.	Part No.	Description	Q'ty
23	00-3325	Spring Pin (Ø2×6L)	1
24	243D-021	Reverse Valve	1
	243D-034	Regulator	1
25	305Y-027	Spring	1
26	00-3816	Steel Ball (Ø2.5)	1
27	00-41175	O-Ring (Ø13×Ø1.5)	1
28	00-4101	O-Ring (Ø3×Ø1)	1
29	243D-029	Trigger Pin	1
30	00-3351	Spring Pin (Ø2×24L)	1
31	243D-031	Pin	1
32	243D-024	Bushing	1
33	243D-025	Valve Stem	1
34	243D-027	Spring	1
35	305-021	Exhaust Deflector	1
36	00-4152	O-Ring (Ø13,8×Ø2,4)	1
37	00-41204	O-Ring (Ø14×Ø1.78)	1
38	00-4127	O-Ring (Ø17,17×Ø1,78)	1
39	305F-032	Washer	1
40	243D-026A	Air Inlet (1/4" PF)	1
	243D-026B	Air Inlet (1/4" PT)	
	243D-026C	Air Inlet (1/4" NPT)	
41	305F-042	Muffler	1
42	243D-033B	Handle Rubber	1
43B	305V-027	Muffler	1

Suggestion: Tightening torque for 4 pcs of M5 Screw must not exceed 3 Nm